

# Farm Retirement

# AUCTION

TIMED ONLINE

3242 430th St., Fertile, MN 56540

PREVIEW: Thursday, April 1 – Thursday, April 15  
LOADOUT: Thursday, April 15 – Thursday, April 29

OPENS: Friday, April 9

CLOSES: THURSDAY, APRIL 15 | 10AM 2021

## TRACTORS & LOADERS

**1995 Ford New Holland Versatile 9680**, 4WD, Cummins engine, 12 spd., 4 hyd., Trimble 250 EZ-Steer guidance system, motor, monitor, receiver, LED lights, 20.8-42 rear duals, 3,772 actual hrs., New hyd. lines, S/ND102282

**1996 Case Agri King 970**, CAH, partial powershift, 2 hyd., 3 pt., quick tach, 540/1000 PTO, full cab kit, Case 70 loader w/bucket, Draft-o-Matic, Firestone 18.4-38 rear duals, 3,704 actual hrs., New seat, single owner, S/N8799013

**1979 IHC 1086**, CAH, 8 spd., 3 hyd., 3 pt., 540/1000 PTO, full cab kit, AM/FM, front rock box, 11:00-16 front tires, 18.4-38 rear duals, 8,023 hrs., TA does not work, S/N2610181U39288

**1967 Farmall 706**, wide front, diesel, 8 spd., 2 hyd., TA, 540/1000 PTO, swinging drawbar, fenders, 18.4-34 rear duals, 5,717 actual hrs., single owner, S/N39131

**1959 Farmall McCormick 240**, narrow front, gas, 4 spd., 1 hyd., 3 pt., 540 PTO, 11.2-36 rear tires, S/N1924

**Allis Chalmers WD45**, wide front, 4 spd., 540 PTO, WD9 loader w/bucket, hub weights, 14.9-28 rear tires, New ring gear, clutch, exhaust, radiator cleaned, single owner

## HARVEST EQUIPMENT

**2002 John Deere 9650**, STS, PRWD, variable spd. feeder house, AHC, DAS, buddy seat, auto fold hopper auger, hopper ext., chopper w/New knives, 300/65R32 front tires, 28L-26 rear tires, 3,087 sep. hrs., 4,804 engine hrs., left final drive maintenance, S/NH09650S695514

**2003 John Deere 930F flex head**, 30', Crary air bar, hyd. fore/aft, low dam, finger reel, New bars, S/NH00930F702743

**Industrias America 430 single axle header trailer**, 20', S/N31109

## GRAIN CART & GRAVITY WAGON

**Unverferth 4500 grain cart**, 14" hyd. folding auger, roll tarp, 1000 PTO, side/rear cameras, sight glass, 20.8-38 tires, shedded, S/NB20740105

**New Holland gravity wagon**, 120. bu., single compartment, galvanized hopper, 4-wheel running gear

## AIR SEEDER

**John Deere 730 air seeder**, 35', 7" space, 3-section fold, rolling baskets, Haukaas

## AIR SEEDER

folding markers, front cultivator harrow, rubber packing wheels w/scrapers, John Deere 787 tow-between commodity cart, twin compartment, ground drive, plastic flighting loading auger, extra disc, 23.1-26 tires, New hyd. fan motor

## SPRAYER

**2003 Case-IH SPX3200 self-propelled sprayer**, 90' booms, 1,000 gal. SS tank, rinse tank, SS chemical inductor, 3" fill, 20" spacing, 5-nozzle bodies, 6-section shut-off, hyd. tread adj., EZ-Boom, EZ-Steer, rear camera, fenders, Firestone 380/90R46 tires, 3,340 engine hrs., S/NJFG0005288

## TILLAGE EQUIPMENT

**Case-IH VibraTiller field cultivator**, 40', 6" space, 3-section fold, walking tandems, 3-bar harrow, S/NJAG0066072

**Case-IH 5800 chisel plow**, 30', 12" space, 3-section fold, walking tandems, carbide tips, 3-bar low use harrow, S/NJA66620230

**Brillion CD-91 disc chisel**, 12', spring gangs, weighted frame, rear hitch, 3-bar harrow, S/N112418

**Ford 207 tandem disc**, 14', 7-1/2" space, mud scrapers, S/N5225

**Melroe harrow**, 35', rear fold, 5-bar

**IHC 770 plow**, 5x16", auto reset, automatic plug, coulter

**IHC 70 plow**, 5x14", trip bottom

**John Deere 2-bottom plow**, rear coulter, steel wheel

## SEMI TRACTOR & BOX TRUCKS

**1991 Kenworth T600 tri-axle**, 60 Series Detroit 12.7L, Eaton Fuller 9 spd., Jake brake, air ride, cruise, air up/down pusher axle, 21' Loadline steel box, 3 pc. end gate, roll tarp, Watson susp. valve, mud scrapers, plumbed for drill fill, Saf-T-Pull, 11R22.5 tires on aluminum rims, 277,558 miles

**1979 IHC S1900 tandem twin screw**, 446 gas V8, 5&4 spd., spring ride, diff lock, 20' box, steel floor, 3 pc. end gate, roll tarp, twin post hoist, 224" WB, 10:00-20 tires, 67,724 actual miles

**1969 Chevrolet/ GMC 5500 single axle**, V8 gas, 4&2 spd., box w/wood floor, roll tarp, twin post hoist, 9:00-20 tires, 19,076 actual miles



## SEMI TRACTOR & BOX TRUCKS

**1955 Chevrolet 6400 single axle**, 4&2 spd., spring ride, box w/steel floor, tarp, single post hoist, w/1,350 gal. poly tank, 16 gal. mix cone w/2" hose & fittings, 88,536 actual miles

## GRAIN HANDLING & AERATION EQUIPMENT

**2013 Westfield MK100-71 unloading auger**, 71'x10", low pro swingout hopper, hyd. lift, 540 PTO, low use, S/N250157

**Grain Chief loadout auger**, 30'x6", electric motor

**Hutchinson loadout auger**, 30'x6", no motor

**Versatile loadout auger**, 41'x8", 540 PTO, recent flighting

**(2) Aeration fans w/aeration tubing**

**Hyd. drill fill auger**

## SCRAPER & ROCKPICKER

**Ashland 50D pull-type scraper**, 5 yd., rear hitch, 8.25-20 tires, New cutting edge & pins, rebuilt cylinders, S/N15152

**Melroe rockpicker**, hyd. lift & dump

## OTHER EQUIPMENT

**John Deere brown box**, no card or processor

**Woods 3180 batwing mower**, constant velocity, 1000 PTO, safety chains, aircraft tires, low use, S/N993877

**Sickle mower**, 7', 2 pt., 540 PTO

**Single axle fuel trailer**, 400 gal., wood deck

**Honda HT3810 lawn tractor**, 38", 10 hp. engine

**Lambert HDT38 pull-type lawn sweeper**

**Pull-type swather transport**

**Manure spreader**, tractor or horse-drawn, spoke wheels

**Swath turner for hay or grain**, 2-wheel

## RECREATION

**2014 Polaris RZR 1000 XP Razor**, 4x4, solid doors, roof,

## RECREATION

**2014 Polaris RZR 1000 XP Razor**, 4x4, solid doors, roof,



## RECREATION

windscreen, stereo, mud flaps, buggy whips, front LED bar, walker shocks, rear compartment

**1990 Polaris Indy 500 snowmobile**, liquid cooled, 5,572 miles, recent overhaul, S/N1802446

**Honda 175 motorcycle**, 2 cyl., kickstart, carburetor, 7,586 miles, needs carb kit, single owner

## TIRES & TANKS

**(4) Goodyear tires**, (2) 20.8-38, (2) 18.4-38 tires

**Asst. tires to include: 8.25-20, 17.5-16, 245/75R16, 265/75R16**

**Implement tires w/axles & hubs**

**(6) Asst. truck tires: 275/80R22.5, 10:00-20, 8.25-20**

**Asst. car tires, 14" & 15"**

**560 gal. tank w/top hatch**

**300 gal. poly tank w/hyd. pump, hoses, on stand**

## PARTS & MISC. ITEMS

**Asst. tillage parts to include: sweeps, harrow teeth, brackets**

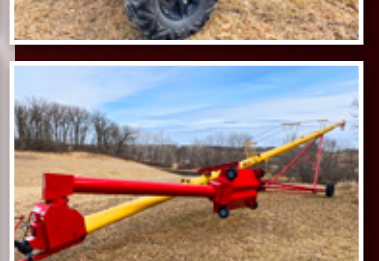
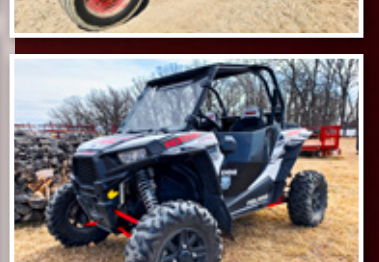
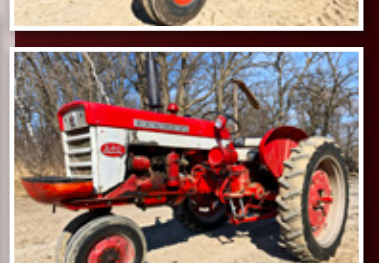
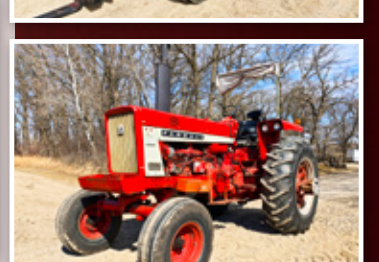
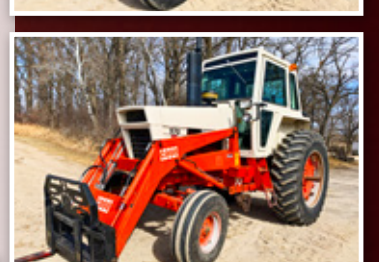
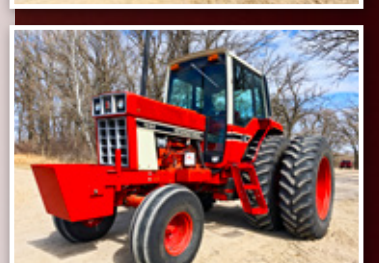
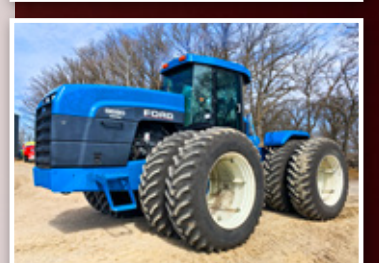
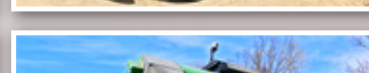
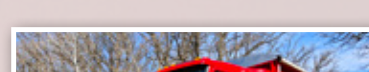
**Delta toolbox & wooden storage chest**

**Ruud high efficiency oil furnace**

**Asst. steel cable**

**Well jack pump**

**Antique scale**



MARK CHRISTIANSON | Mark, 218.784.8253

or Justin Ruth at Steffes Group, 701.237.9173 or 701.630.5583

701.237.9173 | SteffesGroup.com

Steffes Group, Inc., 2000 Main Avenue East, West Fargo, ND 58078



TERMS: All items sold as is where is. Payment of cash or check must be made sale day before removal of items. Statements made auction day take precedence over all advertising. \$35 documentation fee applies to all titled vehicles. Titles will be mailed. Canadian buyers need a bank letter of credit to facilitate border transfer. Scott Steffes MN14-51, Brad Oistad MN14-70, Max Steffes MN14-031, Justin Ruth MN14-041